



Brightly Asset Investment Planning

Paving the way to smarter and safer hospitals

Shift to a longer-term, more strategic asset planning mindset



Brightly by the numbers



13,000+
clients



4.6+ million
users



400 million
work orders
addressed



49 million
assets logged



\$321 billion
in asset value



97%
client satisfaction
rating



Work Order Management

Location- and asset-based work orders, preventive maintenance scheduling on high-value assets



Compliance and Environment of Care Rounding

Built-in, up-to-date compliance standards tied to work orders, pre-built EOC rounding templates and risk assessment frameworks



CAPEX Budgeting and Forecasting

Fully outlined budget needs with up-to-date visuals and metrics to prove and justify funding requests



Analytics

Accessible and customizable reports with dynamic BI visualization tools



Energy Management

Real-time utility tracking, advanced energy reporting, and carbon emission reporting



OPEX Visibility and Management

Full picture of asset or facility health with integrated CMMS data, yielding dynamic asset condition updates

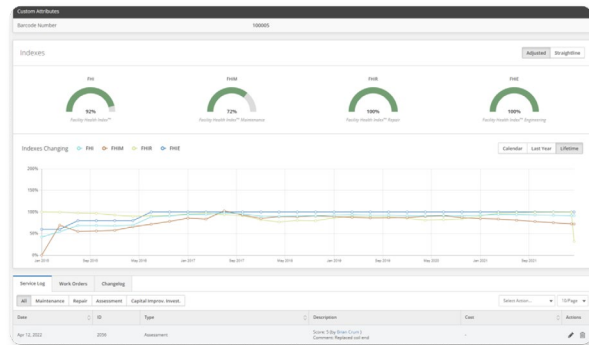


I was most interested because Origin connects with our CMMS to understand the assets we're maintaining and project their end of life. That was a key differentiator... Essentially, we're able to marry operations needs with strategic needs by simply accessing reports from Origin.

Phil Dague
Executive Director, Facilities and Operations, Banner Health

Longer-term asset investment planning and budgeting tools, in one easy-to-use solution

From everyday operational tasks to boardroom capital planning, Brightly’s strategic asset investment planning (AIP) solution for healthcare is where facility and finance leaders turn to take their compliance, preventive maintenance, and longer-term planning to the next level to reduce risk and catastrophic failures, while justifying facilities budgets and capital funding.

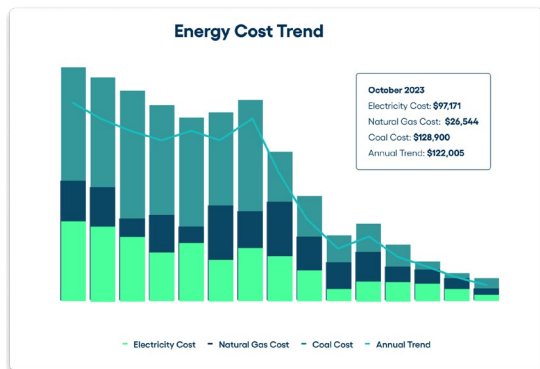


TheWorxHub™

The first step in your work order and asset management foundation, TheWorxHub is an all-in-one, compliance-focused CMMS providing frictionless access to accreditation standards and EOC rounding, helping facilities teams stay organized and streamline operations, while reducing costs.

Origin™

The essential all-in-one capital and asset lifecycle planning tool for facilities leaders as they shift into strategic asset management, Origin works with real-time CMMS data to provide insights into asset health – helping teams improve capital spending while providing business cases and funding justification.



Energy Manager™

Your partner in going green, Energy Manager is an automated energy management tool that helps facility and energy managers identify utility waste, better prioritize action, and make smarter operational decisions with centralized utility management.



We wanted to go with a product that was designed for our type of environment. As we’ve started to utilize TheWorxHub, we’re seeing that it really is tailored toward hospitals. Now with TheWorxHub, we can bring into it a lot more of the compliance issues that we have as a healthcare facility. After using it, you can see how it really helps to keep you organized and on track to be compliant.

Jason Kohlbech

Director of Facilities and Clinics,
Aspirus Wausau Hospital

Experience the Brightly Difference

Our award-winning implementation and support teams are legendary — providing our best service so you can do your best work.

Our partnership doesn't end once your software goes live. Along with our legendary support team, we combine expertise, training, libraries, and curated learnings with anytime, anywhere access to ensure you and your teams have what you need to thrive and be successful.

Accolades

From users to industry-leading thought leaders, Brightly continues to rank as one of the top leading asset management solutions!



Brightly Learning Journey



Brightly Companion

Brightly Companion is a personalized learning experience within our products and provides an interactive training journey guiding you to productivity.



Professional Services

Our Professional Services team enables clients to build a sustainable future, through trusted partnerships and industry-leading expertise.



Brightly Academy

Brightly Academy is designed to provide a self-paced learning environment for key administrators of our products. Your subscription gives you 24/7 access to curated learning content.



Legendary Support

Our Legendary Support team is ready to answer your product questions by phone (always talk to a real person), by email (we strive to respond within the hour), and live chat!



Brightly Community

Brightly Community is your central hub for our Knowledge Base, Help Site, and Brightly Academy so you can conveniently access these resources any time that is right for you.

Brightly delivers the highest security standards



Data Encryption

- Encrypted at rest, in transit, and on devices
- AES 256-bit encryption protocol
- Keys protected with AWS Key Management Service (KMS)



Security Processes

- SOC 2, Type 2 (SSSAE16)
- ISO 27001 Certification
- Third-party Managed Detection and Response (MDR) service for 24/7/365 monitoring
- Require data privacy training for all employees



Software Security

- AWS security services for infrastructure, product, and procedure levels
- Role-based permissions to control data access, scoping
- Separate environments for development, QA testing, and production
- Multi-tenant data server infrastructure, client data segmented from other clients



Data Hosting

- Full data backups and recovery
- Local redundancy of systems, storage, and networks
- Real-time data monitoring
- Compliant with European Unions' Global Data Protection Regulation (GDPR)

Why Brightly?

See why Brightly is the perfect partner as you and your teams shift to a longer-term, more strategic planning mindset.

Expertise and Thought Leadership

With its modern, market-leading capabilities in work order management, environment of care rounding and compliance, budgeting, strategic planning, and energy management, Brightly Software brings its decades-long experience and thought leadership to the forefront in helping hospitals pave the way for efficient, safe, and compliant hospitals.

Now Part of the Siemens Family

Now the leading software partner within Siemens' Smart Infrastructure division, together we are stronger with our state-of-the-art applications and Siemens' data and analytics capabilities — unlocking more power and intelligence. We continue to invest in our portfolio of asset, energy, and planning solutions, driving public agencies to smarter, more data-driven decisions to improve asset outcomes.

Masters of Scale and Efficiency

Today, Brightly Software has captured over ~47M work orders across 8M+ assets, covering 260M sq. feet, and totaling \$47B+ in asset value. Since 2022, TheWorxHub has enabled over 75k monthly users to create and complete over 15M work orders.

About Brightly Software

Brightly, a Siemens company, enables organizations to transform the performance of their assets. Brightly is the global leader in intelligent asset management solutions. Brightly's sophisticated cloud-based platform leverages more than 20 years of data to deliver predictive insights that help users through the key phases of the entire asset lifecycle. More than 12,000 customers of every size worldwide depend on Brightly's complete suite of intuitive software—including CMMS, EAM, Strategic Asset Management, IoT Remote Monitoring, Sustainability and Community Engagement. Paired with award-winning training, support and consulting services, Brightly helps light the way to a bright future with smarter assets and sustainable communities. For more information, visit brightlysoftware.com.